



Product Service

# CERTIFICATE

No. Z2 16 09 10256 263

**Holder of Certificate:** Berliner Seilfabrik GmbH & Co.

Lengeder Straße 4  
13407 Berlin  
GERMANY



**Certification Mark:**



**Product:** Playground equipment

The product was tested on a voluntary basis and complies with the essential requirements. The certification mark shown above can be affixed on the product. It is not permitted to alter the certification mark in any way. In addition the certification holder must not transfer the certificate to third parties. See also notes overleaf.

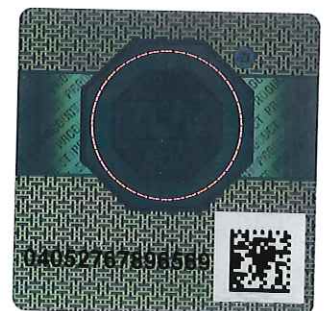
**Test report no.:** 713075919-10

**Valid until:** 2021-09-08

**Date,** 2016-09-09

Page 1 of 2

*Harald Bardowicks*  
( Harald Bardowicks )





Product Service

**CERTIFICATE**

No. Z2 16 09 10256 263

**Model(s):** 90.295.001 Tower1, 90.295.002 Tower2,  
90.295.003 Tower3, 90.295.006 Tower6,  
90.295.007 Tower7

**Parameters:**

Posts made of Terranos steel tube,  $\varnothing$  133 mm,  
S=5-7.1 mm, colour powder-coated in  
epoxy-polyester annealing process.

Net rings made of stainless steel tube  $\varnothing$  60.3 mm.

Bamboo bars on a support plate made of a  
profile-milled HPDE plate, 19 mm thick, grained  
surface, all corners round-milled.

U-rope round strand cable with stand cores and  
cable cores made of galvanized wires, outside  
strands coated in polyester yarn,  $\varnothing$  min. 16 mm.

Safety net made of stainless steel  $\varnothing$  4 m, mesh  
width 40 x40 mm.

90.295.001 Tower1 Dimensions (L x W x H):	3,2 x 2,9 x 9,5 m
90.295.002 Tower2, Dimensions (L x W x H):	5.7 x 8.4 x 8.7 m
90.295.003 Tower3 Dimensions (L x W x H):	5.4 x 8.2 x 7.3 m
90.295.006 Tower6 Dimensions (L x W x H):	4.5 x 2.2 x 5.4 m
90.295.007 Tower7 Dimensions (L x W x H):	4.8 x 4.8 x 10.8 m

**Tested according to:** EN 1176-1:2008  
EN 1176-3:2008  
EN 1176-11:2008

**Production Facility(ies):** 10256

Page 2 of 2