

PentaBoo M - Product Specification



Greenville PentaBoo M

The Pentagode M gives children the thrill and the experience of the height. The large dimension of the spacial net offers space for many children at once. The Pentagode M offers through its shape much room right up to the top, on which a Greenville Playhouse Boo is. The Greenville Playhouse Boo is surrounded with HDPE and bamboo panels, but offers through the gaps between the bamboo panels and windows many views.

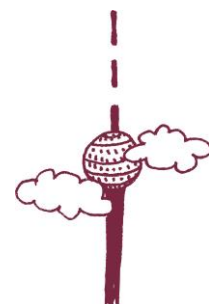
PentaBoo M – At a glance.

Product Family:	Greenville	Number of Foundations:	11 pc.
Item Number:	91.200.022	Concrete Volume C20/C25:	10.4 m³ (367.3 ft³)
Children's Age:	5+	Number of skilled installers required:	3
Fall Height (DIN EN 1176):	0.92 m (3'-1")	Installation Time without foundation:	9 h
Length x Width x Height:	9.96 x 10.47 x 6.18 m (32'-9" x 34'-5" x 20'-4")	Dimensions of largest part:	Ø 0.133 m x 3.70 m (Ø 6" x 12'-2")
Protective Surfacing Area (DIN EN 1176):	12.96 x 13.47m	Weight of heaviest part:	210 kg (463 lbs)
Protective Surfacing Area (ASTM 1487):	13.64 x 14.15m (44'-9" x 46'-5"ft)	Shipping Volume:	Upon request
Minimum space required DIN EN 1176:	116.10 m²	Spare part guarantee:	Lifelong
Minimum space required ASTM 1487:	132.07 m² (1421.6 ft²)	Certificate according to DIN EN 1176:	Z2 17 02 10256 261 TÜV Product Service

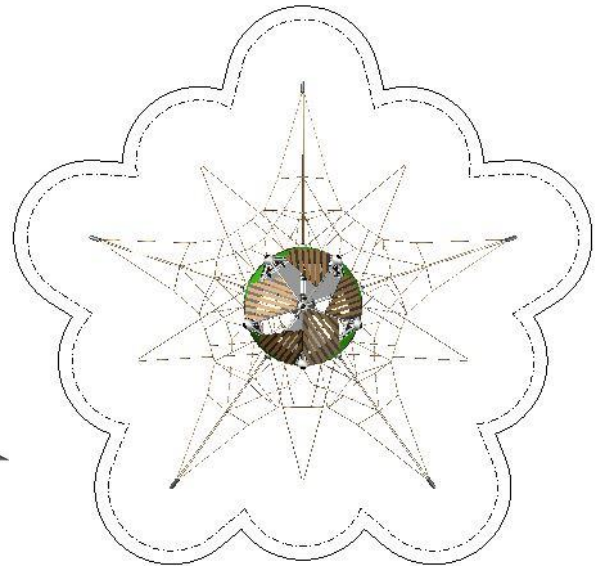

Berliner
 Berliner Seilfabrik GmbH & Co.
 Lengeder Straße 2/4
 D-13407 Berlin

Tel. +49.(0)30.41 47 24-0
 Fax +49.(0)30.41 47 24-33

info@berliner-seilfabrik.com
 www.berliner-seilfabrik.com



PentaBoo M - Product Specification



Technical Data.

The following text can also be used for tenders.

- Pentagode M
The central mast carries a Greenville Boo Playhouse
- Greenville Boo
Boo-Tube framework with nodes, Bamboo- and HDPE Panels with windows

Pentagode M:

Central mast:

Steel post 133 mm (5 1/4"), wall thickness 5 mm (3/16"), anti-corrosion treatment and color finish: sandblasting and solvent-free zinc-/ epoxy-/ polyester-process

External bracing cables:

Two parallel U-Rope-round strand ropes with steel cores; galvanized wires surround the core, external strands covered with non-abrasive UV-resistant Polyester-yarn; Ø 16 mm (5/8"); load to failure is 65 kN per cable

Spacial netting:

Rope crossing points are localized with durable, forged aluminum-alloy cloverleaf rings and forged aluminum-alloy ballknots (no plastic connections); in situ-replaceable rope strands (no special tools required). The Pentagode's tensioning system has been modified and guy ropes added

Ropes:

U-Rope®-round strand ropes with galvanized and covered wires; external strands with non-abrasive UV-resistant Polyester-yarn (no Polypropylene): Ø 18 mm (11/16")

Boo:

Tube framework:

A combination of straight and bended stainless steel Framework®-tubes, Ø 60,3 mm (2 3/8"), material AISI304 (DIN 1.4301). The tubes are connected to build a space framework with a triangular footprint.

Nodes:

Framework-aluminum ball connectors; Ø 250 mm (9'-13/16"); anti-corrosion treatment and color finish: sandblasting and solvent-free zinc-/ epoxy-/ polyester-process; incorporating an ASTEM TT net tensioning system; securely closed with durable EPDM- caps

Bamboo panels:

Bamboo strips 90 mm, (3'-1/2") mounted at a particle board made from HDPE, 19 mm (3/4") thickness, rounded edges, mounted with aluminum plate clamps to the tubes of the framework

