



Product Service

CERTIFICATE

No. Z2 18 04 10256 271

Holder of Certificate: Berliner Seilfabrik GmbH & Co.

Lengeder Straße 4
13407 Berlin
GERMANY



Certification Mark:



Product: Playground equipment
Spatial network

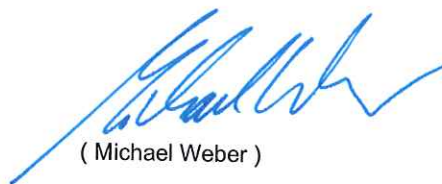
The product was tested on a voluntary basis and complies with the essential requirements. The certification mark shown above can be affixed on the product. It is not permitted to alter the certification mark in any way. In addition the certification holder must not transfer the certificate to third parties. See also notes overleaf.

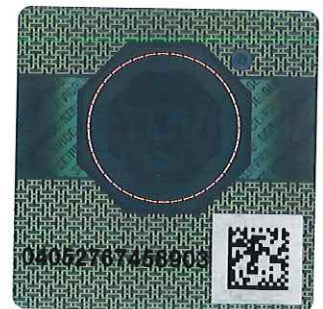
Test report no.: 713125107-05

Valid until: 2023-04-23

Date, 2018-04-27

Page 1 of 2


(Michael Weber)





Product Service

CERTIFICATE

No. Z2 18 04 10256 271

Model(s): 90.100.043.2 The Cube, 90.100.043.3 The Cube L,
90.100.043.1 The Globe

Parameters:

Larch wood support structure made of laminated timber larch wood with wood composite span containers/connection struts.

U-rope round strand cable with stand cores and cable cores made of galvanised wires, outside strands coated in polyester yarn, Ø 18 mm.

Post anchors made of powder-coated steel.

90.100.043.2 The Cube:
Dimensions (L x W x H): 3.60 x 4.20 x 3.70 m
Drop height: 2.28 m

90.100.043.3 The Cube L:
Dimensions (L x W x H): 4.40 x 5.10 x 4.50 m
Drop height: 2.63 m

90.100.043.1 The Globe:
Dimensions (L x W x H): 4.40 x 4.40 x 3.80 m
Drop height: 1.59 m

Tested according to:

DIN EN 1176-1:2017
DIN EN 1176-11:2014
EN 1176-1:2017
EN 1176-11:2014

Production Facility(ies):

10256

Page 2 of 2