



Product Service

CERTIFICATE

No. Z2 18 04 10256 270

Holder of Certificate: Berliner Seilfabrik GmbH & Co.

Lengeder Straße 4
13407 Berlin
GERMANY



Certification Mark:



Product: Playground equipment

The product was tested on a voluntary basis and complies with the essential requirements. The certification mark shown above can be affixed on the product. It is not permitted to alter the certification mark in any way. In addition the certification holder must not transfer the certificate to third parties. See also notes overleaf.

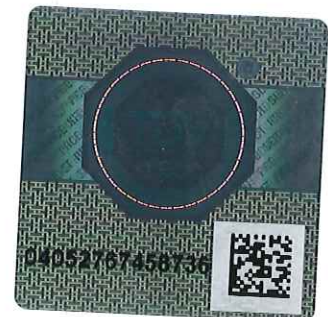
Test report no.: 713125107-01

Valid until: 2023-04-02

Date, 2018-04-09

(Jens Biesenack)

Page 1 of 2



**CERTIFICATE****No. Z2 18 04 10256 270****Model(s):****90.111.000 (Cosmo S Base), 90.110.120 (Cosmo Base),
90.111.040 (Cosmo S.04), 90.111.170 (Cosmo S.17),
90.112.060 (Cosmo.06), 90.112.200 (Cosmo.20)****Parameters:**Tubes: Frameworkx®-Stainless steel tubes,
bent, ø 60,3 mm.Ball connectors: Frameworkx®-aluminium ball
connectors, ø 250 mm, sandblasted and
solventfree powder-coated.Ropes: U-Rope®-round strand rope withstranded
cores and rope cores made of galvanized steel
wires. Outer strands coated with texturised
polyester yarn.Netting: Rope crossing points, fixed aluminium
parts (joint-ferrule).

Possible add-on units:

Access nets, Net wall, Rubber pods, Banister, sliding
pole, climbing wall, net ramps climbing ramp, Duck Jibe.

90.110.120.Cosmo Base

Dimensions (L x W x H): 4.30 x 4.40 x 3.80 m
Max. drop height: 2.30 m

90.111.000.Cosmo S Base

Dimensions (L x W x H): 3.40 x 3.20 x 2.90 m
Max. drop height: 1.83 m

90.111.040.Cosmo S.04

Dimensions (L x W x H): 5.70 x 4.60 x 2.90 m
Max. drop height: 1.83 m

90.112.060.Cosmo.06

Dimensions (L x W x H): 8.60 x 7.20 x 3.80 m
Max. drop height: 2.30 m

90.111.170.Cosmo S.17

Dimensions (L x W x H): 5.59 x 6.88 x 2.88 m
Max. drop height: 1.80 m

90.112.200.Cosmo.20

Dimensions (L x W x H): 8.50 x 8.90 x 3.80 m
Max. drop height: 2.30 m**Tested
according to:**DIN EN 1176-1:2017
EN 1176-1:2017
DIN EN 1176-11:2014
EN 1176-11:2014**Production
Facility(ies):**

10256

Page 2 of 2