

# Made for strong connections.

Our unique components in close-up.



  
**Berliner**  
Play equipment for life

# Berliner Seilfabrik

## Play equipment for life

This slogan means a lot to us! It defines how we work and construct playgrounds. In the almost 50 years in which we have been dealing with playground equipment, we have built up an extensive product range with creative ideas and industry expertise. We offer unforgettable, fascinating designs for all types of play, whether indoors or outdoors.



Berliner Seilfabrik  
Play Equipment Corporation  
96 Brookfield Oaks Drive  
Suite 140  
Greenville, SC 29607

T + 1 864 627 1092  
O + 1 877 837 3676  
F + 1 864 627 1178

info@berliner-playequipment.com  
www.berliner-playequipment.com

# Here, everything fits!

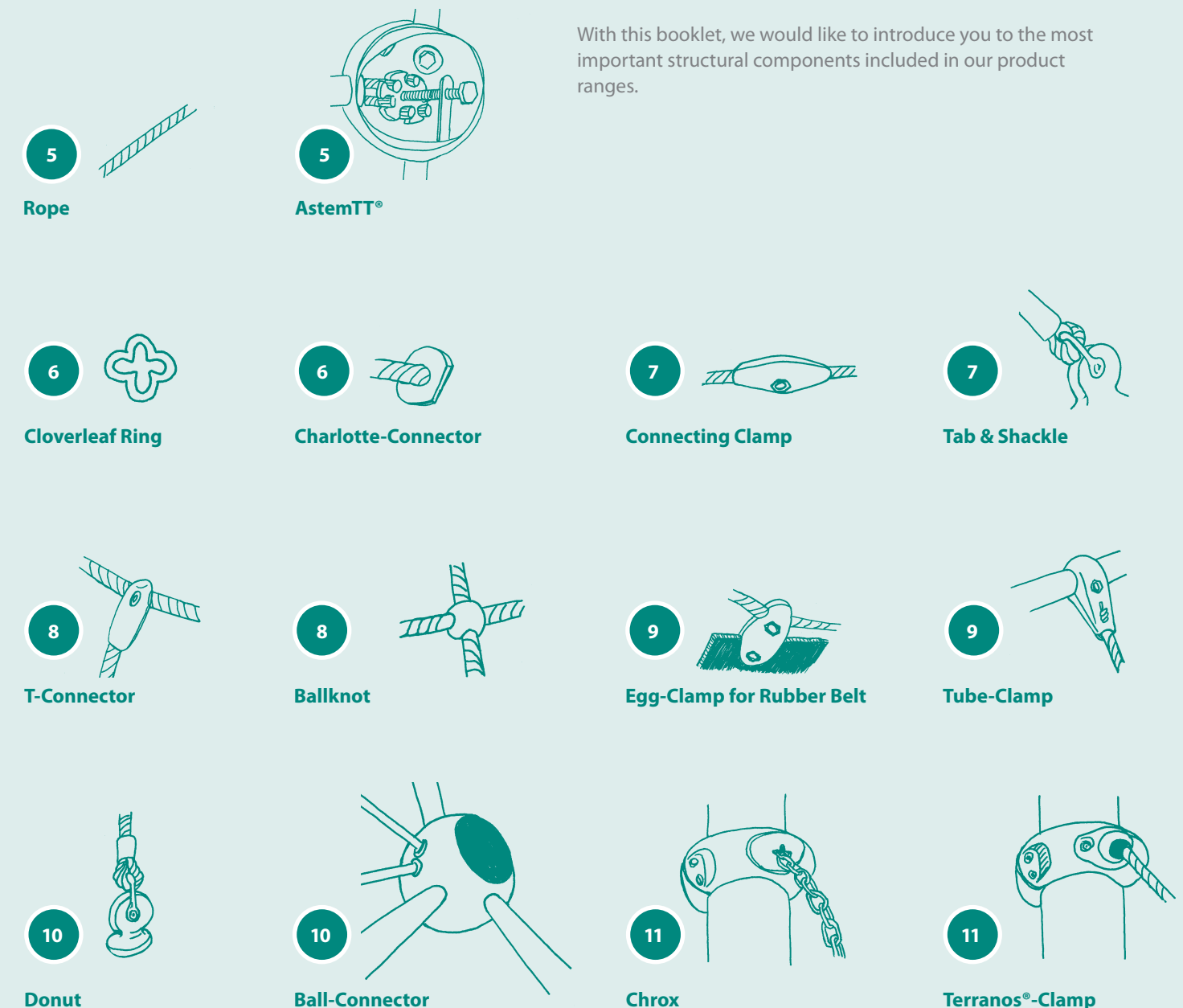
Berliner Seilfabrik's play equipment is easy-care and low-maintenance, thereby minimizing follow-up costs. Thanks to our equipment's robust construction, extraordinary durability comes as standard. That's why our products include a guarantee, up to 15 years.

From the initial planning stage, we are there for our customers, remaining on hand for the entire life of our play equipment. After taking into consideration your specifications and ideas, we design playgrounds that combine optimum play value with optimum safety. It is not only our individual concepts and designs that set us apart, but our technical solutions too!

Up to 15 international patents, and several pending, we hold for our products are a proof of our leading role in the playground industry. Durability, functionality, safety and ease of maintenance are at the forefront of our ethos, these criteria being combined into each of our components.

Apart from their high play value, all Berliner Seilfabrik's products share another thing in common: they are highly durable, thanks to our careful choice of materials and the components' dimensions. All the structural elements that make up our Frameworkor® space frames enjoy long-term protection against corrosion. Either they are coated using the two-layer epoxy-polyester process, as is the case with our tubular struts, or are made of aluminium, like the hubs and mounting plates for rope and panels.

With this booklet, we would like to introduce you to the most important structural components included in our product ranges.







# Installation, Maintenance & Design

When it comes to maintenance, you can rely on our expert staff or authorized specialist companies. Our detailed, illustrated installation instructions also allow self-assembly.

Just as the highest quality cars require regular checks to remain roadworthy, playground equipment too should have regular health checks to guarantee its long-term safety. Our in-house experts or qualified contracting companies are on hand to fulfill these checks on your behalf.

Bearing the TÜV logo, our play equipment is tested and certified in accordance with DIN EN 1176, the ASTM F1487 and CSA Z614. Strict adherence to the relevant safety regulations ensures that our play equipment meets the highest levels of safety and reliability.

After many years of intensive use, even the most robust play equipment is subject to wear and tear. But this by no means spells the end of the road for Berliner Seilfabrik's play equipment. We can even manufacture replacement netting for our oldest rope climbing frame dating back to 1971. Thanks to our lifelong guarantee for replacement parts, even after fifty years of intense use, our play equipment remains attractive for children. While creating our technically ambitious play equipment, we have always placed paramount importance on design and, above all, the safety of the children playing on it.



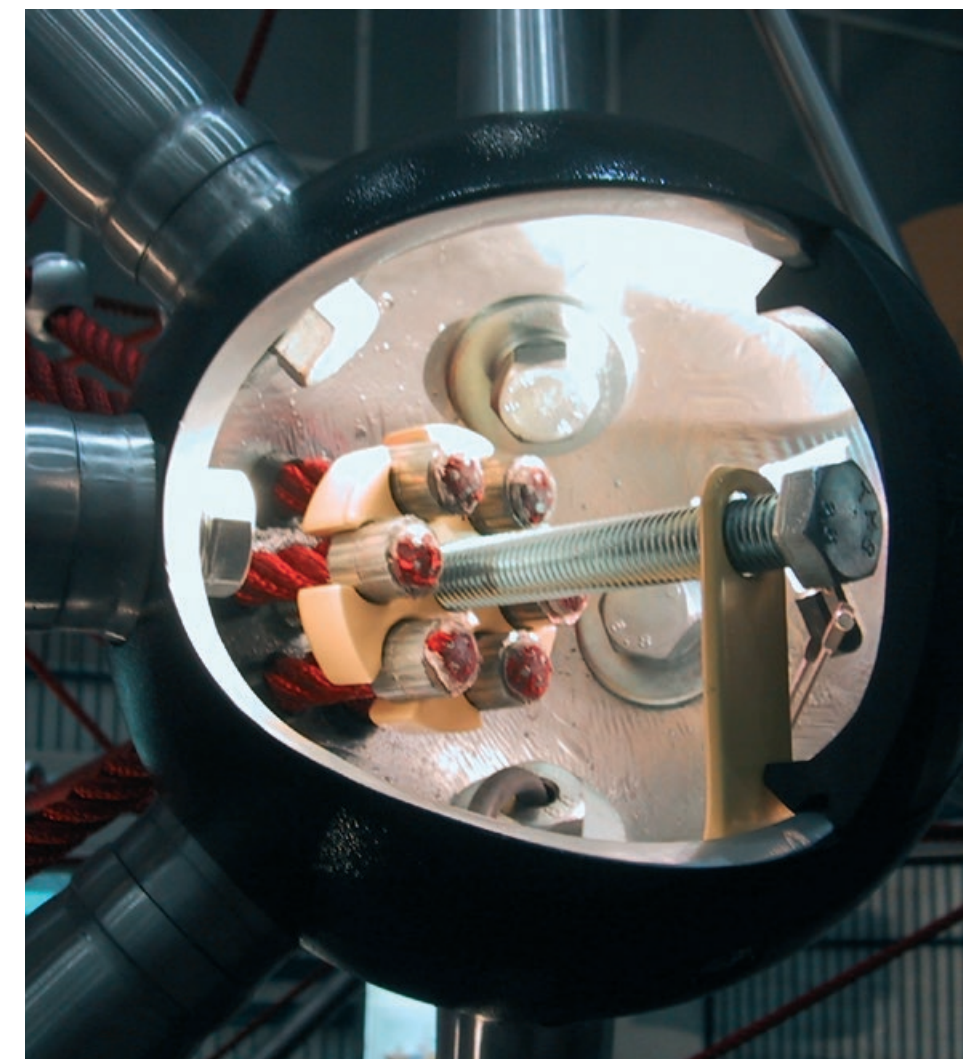
## Rope

- We manufacture our ropes in-house
- Stranded with max. 63 rpm
- Highest quality standards and technical specifications
- A wide range of diameters, metal cross-sections and color variations available
- Ropes to suit the most varied purposes and loading requirements
- Single outer strands sheathed in polyester yarn with exceptional compression, manufactured to carpet yarn standard ensure maximum abrasion resistance and color fastness.



## AstemTT®

- Standard tensioning system for our rope climbing nets
- Patented tensioning system safely encased within the sphere, which is harmoniously integrated into the Frameworkx® system
- Maximum safety: no structurally required components intrude into the play area
- Simple installation and maintenance
- Enables uniform tensioning and re-tensioning





## Cloverleaf Ring

- The Cloverleaf Ring fixes the point where two rope lines cross over in the spatial net, without forming any entanglements or openings
- Forces are transferred directly from rope to rope in the Cloverleaf Ring
- High-strength, non-corroding aluminum alloy
- The Cloverleaf Ring makes interchanging individual rope components possible

### Using the Cloverleaf Ring:

In all spatial nets i.e.:

- Univers® • Polygodes • Cosmo® • Greenville® • DNA Tower



## Charlotte-Connector

- Patented interior fastening and tensioning system for the end of the rope in the tube
- Attachment requires no hooks or visible swaging - no entanglements or catch points possible
- Simple exchange of prefabricated nets on-site without additional adjustments
- Compensates for inaccuracies in installation

### Using the Charlotte Connectors:

- Twist • Shout

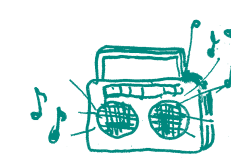


## Connecting Clamp

- Connects rope ends that approach one another
- Guarantees replaceability of single rope sections
- The aluminum clamp comprises of two halves
- Fixation of steel swaging in interior pockets
- No pinch points
- No gaps, edges or openings that can injure a child's fingers

### Using the Connecting Clamp:

- Univers® • HodgePodge® • Tunnels • Planar nets



## Tab & Shackle

- Alternative connection of rope elements with particularly high tensile stress (see Terranos®-Clamp)
- Designed in screw and welded version
- Tab & Shackle guarantee a high-strength connection between the rope and the tube or Terranos®-Clamp
- Direct swaging of Shackle and rope allows for rapid assembly to the Tab
- Compact construction avoids crushing and pinch points
- Special manufacture for Berliner Seilfabrik, adapted to the most varied requirements

### Use of Tab & Shackle

- for special construction • wasp nest suspension
- suspension of various connection elements





## T-Connector

- Secure interlocking connection of rope end points without damage to the rope, thanks to steel swaging with other ropes
- Fixation of steel swaging in the interior "pocket"
- High slip-resistance, secure hold of rope connections
- Corrosion-resistant, recyclable aluminum alloy
- Impact-resistant at any temperature, greatest security against vandalism
- No gaps, edges or openings that can injure a child's fingers

### Using the T-Connector i.e.:

- Polygodes • Univers® • Cosmo® • Greenville® • Twist

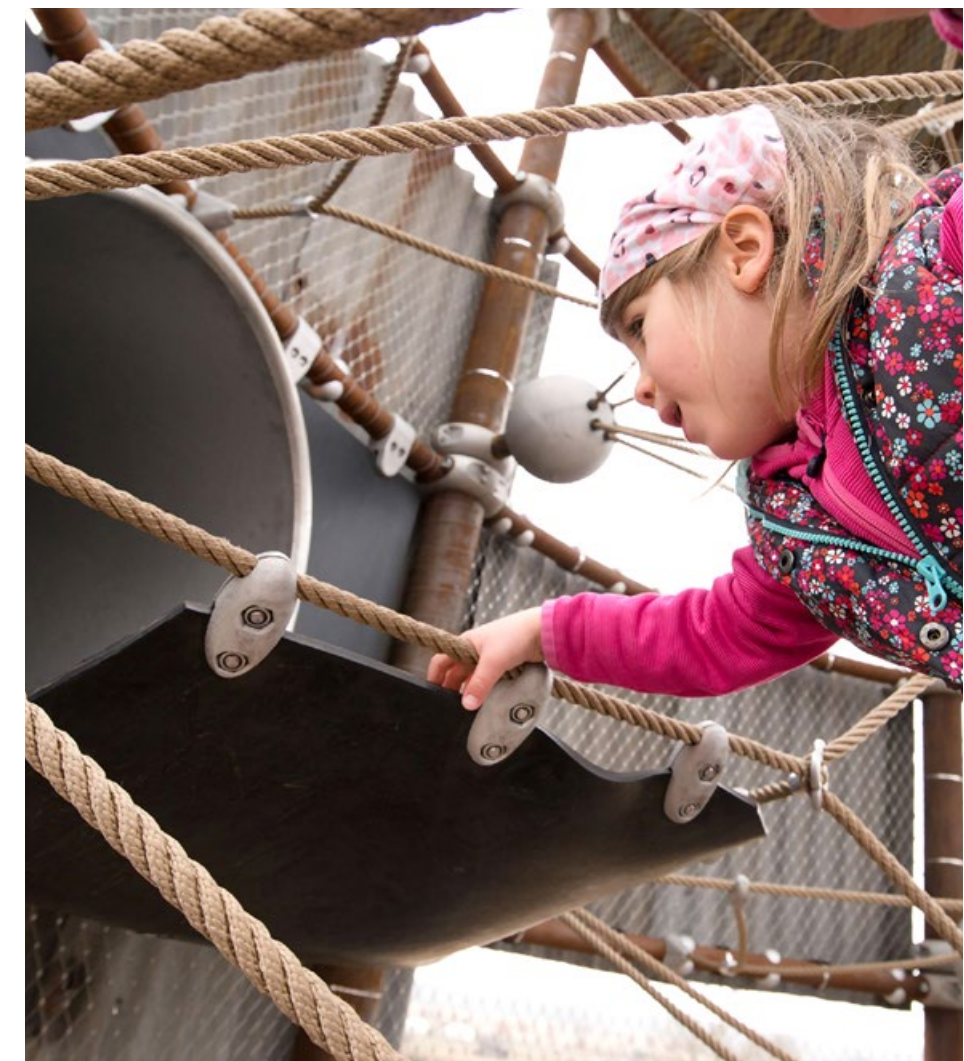


## Egg-Clamp for Rubber Belt

- Clamp provides a durable connection between the rope and rubber membrane
- Abrasion-resistant belt rubber available in various shapes and sizes
- Thickness and density of material make the rubber membrane durable and vandal-resistant
- Excellent UV-resistance despite recyclable material
- Low to no maintenance

### Using the Egg-Clamp for Rubber Belt:

- Greenville® • Cosmo® • Pentagode® • Univers® • Terranos® • CombiNation

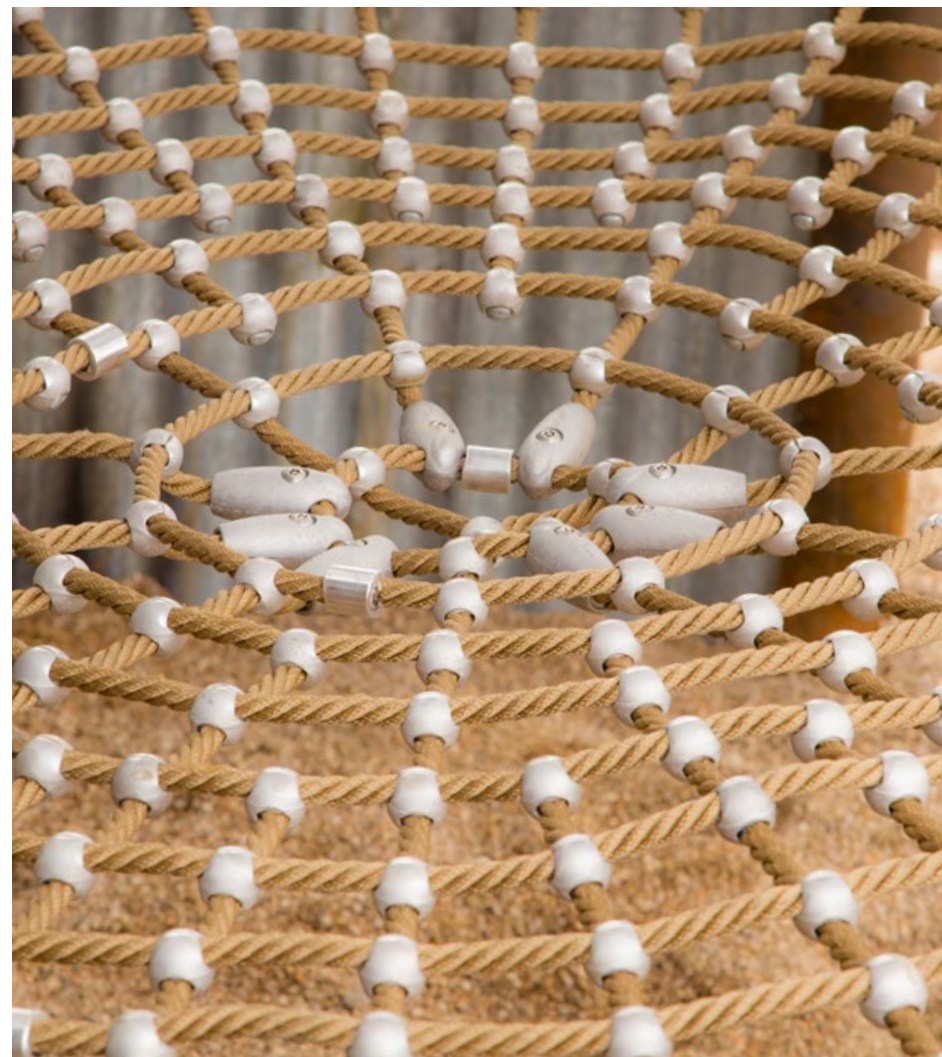


## Ballknot

- Fixation of rope crossover points in the flat net using secure, interlocking Ballknots
- High slip-resistance, secure hold at the crossover point position
- Corrosion resistant recyclable aluminum alloy
- Impact-resistant at any temperature, greatest security against vandalism
- No gaps, edges or openings within reach of children
- Worldwide patent application for the new production process

### Using the Ballknot:

- All planar nets • Terranos® & Terranova • Geos
- All access nets, bridges and tunnels



## Tube-Clamp

- Well designed component to connect rope elements to tubes
- No dangerous edges or pinch points
- Tensile load on rope extends through high strength steel swaging

### Using the Tube-Clamps i.e.:

- various add-on components • Cosmo® • Greenville® • HodgePodge® • Univers®





## Donut

- The Donut forms an interlocking connection between the rubber mat and the aluminum rope clamp under predefined compression ratios
- Predefined compression ratios lead to extreme durability
- Fixes and protects the rubber mat
- Special shape adapted to the application

**Use of the Donut:**  
• Rubber bridge • Chessboard bridge



## Ball Connector

- The aluminum Ball Connector is the basic element for all Framework<sup>x</sup> scaffolding for Berliner spatial net devices to connect the tubes and net
- Ball Connectors equipped with the interior Astem TT<sup>®</sup> spatial net tensioning system
- Wall thickness between 5/16" - 1 3/4" depending on the area of application
- Corrosion prevention, solvent free epoxy-polyester powder coating
- Access to interior connections possible, securely locked via durable EPDM lenses

**Using the Ball Connector at all products with:**  
• Tube connections (e.g. Twist, Urban Design, Woodville<sup>®</sup>, Greenville<sup>®</sup>, Geos) • Spatial nets (equip. with Astem TT<sup>®</sup> spatial net tensioning system e.g. Cosmo<sup>®</sup>, Univers<sup>®</sup>, Greenville<sup>®</sup>, DNA Tower)



## Terranos<sup>®</sup>-Clamp

- Connecting element to connect ropes (Frox)
- Stepless height adjustment
- Clamp halves are connected using vandal-resistant screws
- Tubes can be positioned in a wide range of angles
- The Frox makes connecting ropes to posts possible without any edges or points that can catch fingers and is easy on the hands
- The two-piece arrangement of the Terranos<sup>®</sup>-Clamp and the contained Frox-sphere allows for rapid, economical replacement in case of wear
- The Terranos<sup>®</sup>-Clamp additionally allows for the connection of chains (Chrox) and tubes

**Using the Terranos<sup>®</sup>-Clamp & Frox Connection:**  
Terranos<sup>®</sup> & Terranova, Greenville<sup>®</sup>, HodgePodge<sup>®</sup>



## Chrox

- To connect rope ends with chain connection aided by the Terranos<sup>®</sup>-Clamp
- Simple on-site adaptation of rope lengths and rope tensions
- Compensation for inaccuracies in installation
- No pinch points or sharp edges accessible to the user

**Using the Chrox:**  
Terranos<sup>®</sup>, Terranova, CombiNation, Greenville<sup>®</sup>







  
**Berliner**  
Play equipment for life

**Berliner Seilfabrik**  
Play Equipment Corporation  
96 Brookfield Oaks Drive  
Suite 140  
Greenville, SC 29607

T + 1 864 627 1092  
F + 1 864 627 1178

[info@berliner-playequipment.com](mailto:info@berliner-playequipment.com)  
[www.berliner-playequipment.com](http://www.berliner-playequipment.com)

Published: January 2019