

The Cube – Product Specification



The Joe Brown Collection – Natural Play

In memory of and homage to the pioneer of rope play equipment, the Berliner Seilfabrik is releasing a new range of equipment called “the Joe Brown Collection” in autumn 2014.

“Natural” fun is also provided by the second model of the Joe Brown Collection. The Cube makes use of two classic playground designs. The space net offers kids maximal development possibilities when climbing and romping about. Wood as a natural material provides warmth and blends into the surroundings. In addition, The Cube impresses through its futuristic design.

The Cube - At a glance.

Product Family:	Joe Brown Collection	Number of Foundations:	3 pc.
Item Number:	90.100.043.2	Concrete Volume C20/C25:	2.2 m ³ (78 ft ³)
Children's Age:	3+	Number of skilled installers required:	3 persons
Fall Height (DIN EN 1176):	2.28 m (7'-6")	Installation Time without foundation:	8 hours
Length x Width x Height:	3.6 m x 4.2 m x 3.7 m (11'-11" x 13'-7" x 12'-2")	Dimensions of largest part:	1.2 x 0.3 x 0.2 m (3'-12" x 0'-12" x 0'-8")
Protective Surfacing Area (DIN EN 1176):	8.2 m x 7.6 m	Weight of heaviest part:	60 kg (133 lbs)
Protective Surfacing Area (ASTM 1487):	7.8 m x 7.3 m (25'-8" x 23'-10")	Shipping Volume:	8 m ³ (283 ft ³)
Minimum space required DIN EN 1176:	49.2 m ²	Spare part guarantee:	Lifelong
Minimum space required ASTM 1487:	44.9 m ² (484 ft ²)		

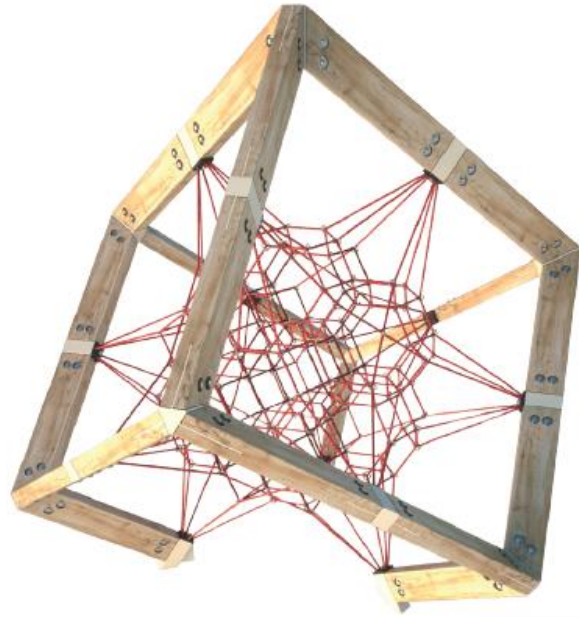
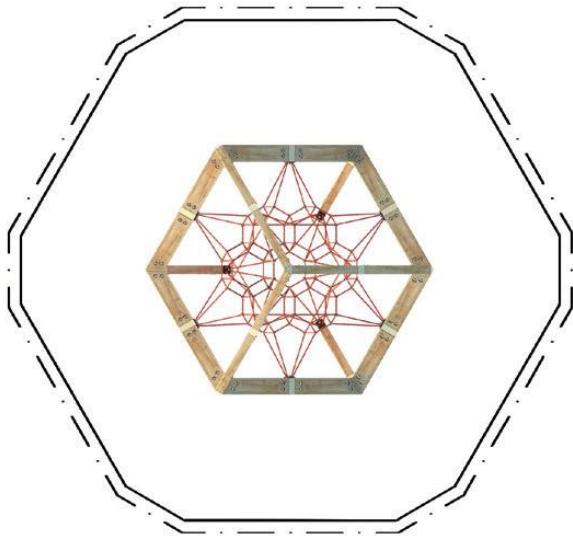

Berliner
 Berliner Seilfabrik GmbH & Co.
 Lengeder Straße 2/4
 D-13407 Berlin

Tel. +49.(0)30.41 47 24-0
 Fax +49.(0)30.41 47 24-33

info@berliner-seilfabrik.com
 www.berliner-seilfabrik.com



The Cube – Product Specification



Technical Data.

The following text can also be used for tenders.

Climbing Cube "The Cube" from the Joe Brown Collection, consisting of a larch timber structure with a 12-fold Spacial net, equipped with the ASTEM TT tension system concealed in the containers for clamping the spatial net. The foundation parts made of powder-coated steel, fitted into the wood elements, ensure the installation of the support members without direct involvement of the bottom timber carrier with the ground.

Ropes:

U-Rope®-round strand ropes with galvanized and covered wires; external strands with non-abrasive UV-resistant Polyester-yarn (no Polypropylene): Ø 18 mm (11/16")

Spacial netting:

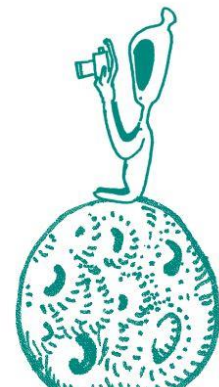
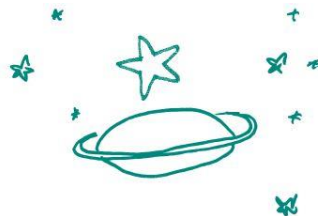
Rope crossing points are localized with durable, forged aluminum-alloy cloverleaf rings and forged aluminum-alloy ballknots (no plastic connections); in situ-replaceable rope strands (no special tools required)

Net tensioning system:

Frameworkx® clamping points: 120 x 120 x 230 mm; anti-corrosion treatment and color finish: sandblasting and solvent-free zinc-/epoxy-/ polyester-process; connected to wooden girders with bolts on connection flanges, incorporating an Astem TT net tensioning system; securely closed with durable EPDM- caps

Structural:

Elements of glued laminated-larch timber, connected through Frameworkx® clamping points, coconnection flanges




Berliner
Berliner Seilfabrik GmbH & Co.
Lengeder Straße 2/4
D-13407 Berlin

Tel. +49.(0)30.41 47 24-0
Fax +49.(0)30.41 47 24-33

info@berliner-seilfabrik.com
www.berliner-seilfabrik.com