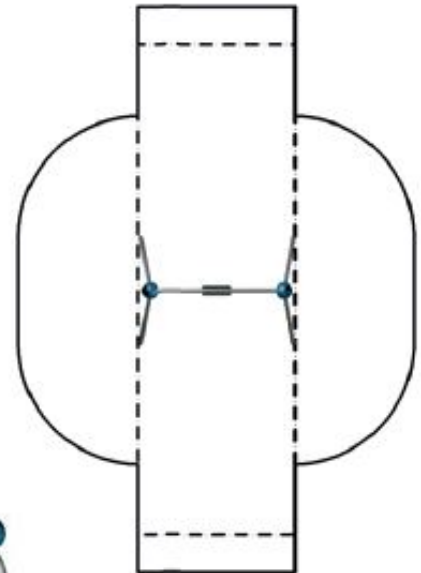


Swingo.2.1 – Product Specification



Swingo.2.1

The small one-seater-swing features the new organic UDB-design. A modern day swing doesn't have to be made from two A-frames and a horizontal beam.



Swingo.2.1 – at a glance.

Product Family:	Playpoints	Number of Foundations:	4 pc.
Item Number:	90.260.501	Concrete Volume C20/C25:	0.6 m³ (21.2 ft³)
Children's Age:	3+	Number of skilled installers required:	2
Fall Height (DIN EN 1176):	1.3 m (4'-4")	Installation Time without foundation:	2 hours
Length x Width x Height:	2.5 m x 1.7 m x 2.3 m (8'-3" x 5'-7" x 7'-7")	Dimensions of largest part:	2.9 m x 0.9 m x 0.1 m (9'-7" x 3'-0" x 0'-4")
Protective Surfacing Area (DIN EN 1176):	7.6 m x 2.5 m	Weight of the heaviest part:	20 kg (45 lbs)
Protective Surfacing Area (ASTM 1487):	8.7 m x 6.1 m (28'-7" x 20'-1")	Shipping Volume:	1.3 m³ (46 ft³)
Minimum space required DIN EN 1176:	18.1 m²	Shipping Weight:	120 kg (265 lbs)
Minimum space required ASTM 1487:	37.5 m² (404 ft²)	Spare part guarantee:	Lifelong
		Certificate according to DIN EN 1176:	No.: Z2 15 06 10256 231 TÜV Product Service

Technical Data.

The following text can also be used for tenders.

Framework:

Stainless steel tube bends Ø 60.3 mm (2 3/8"), connected to Frameworx®-aluminum ball connectors; Ø 250 mm (9-13/16"); anti-corrosion treatment and color finish: sandblasting and solvent-free zinc-/ epoxy-/ polyester-process; securely closed with durable EPDM-caps

Swing seat:

The black rubber safety swing seat is by stainless steel chains rotatable mounted to the cross tube mounted in maintenance free nylon bushes



Berliner Seilfabrik
Play Equipment Corporation
96 Brookfield Oaks Drive, Suite 140
Greenville, SC 29607

T + 1 864 627 1092
F + 1 864 627 1178

www.berliner-playequipment.com
info@berliner-seilfabrik.com




Berliner
Berliner Seilfabrik
Play Equipment Corporation
96 Brookfield Oaks Drive, Suite 140
Greenville, SC 29607

T + 1 864 627 1092
F + 1 864 627 1178

www.berliner-playequipment.com
info@berliner-seilfabrik.com