

Neptun.19 – Product Specification



Univers – Classics among rope playground equipment

Net structures offer hours of fun and adventure on several levels – climbing and swinging, up and down, horizontally and vertically – space on earth.

The original spatial nets: Born over 40 years ago as a play concept, continuously further developed in form and detail, still popular even after several generations.

Neptun.19 – At a glance.

Product Family:	Univers	Number of Foundations:	18 pc.
Item Number:	90.141.127	Concrete Volume C20/C25:	4.6 m³ (162.4 ft³)
Children's Age:	5+	Number of skilled installers required:	4
Fall Height (DIN EN 1176):	2.52 m (8'-3")	Installation Time without foundation:	8 hours
Length x Width x Height:	12.9 m x 12.9 m x 6.5 m (41'-9" x 42'-3" x 21'-1")	Dimensions of largest part:	9.0 m x 2.3 m x 2.0 m (29'-7" x 7'-7" x 6'-7")
Protective Surfacing Area (DIN EN 1176):	16.5 m x 16.2 m	Weight of heaviest part:	160 kg (353 lbs)
Protective Surfacing Area (ASTM 1487):	16.5 m x 17.3 m (54'-3" x 56'-9")	Shipping Volume:	Upon request
Minimum space required DIN EN 1176:	154.9 m²	Spare part guarantee:	Lifelong
Minimum space required ASTM 1487:	174.0 m² (1,872 sf)		


Berliner
 Berliner Seilfabrik
 Play Equipment Corporation
 96 Brookfield Oaks Drive, Suite 140
 Greenville, SC 29607

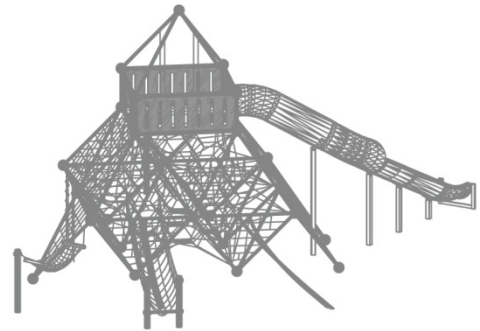
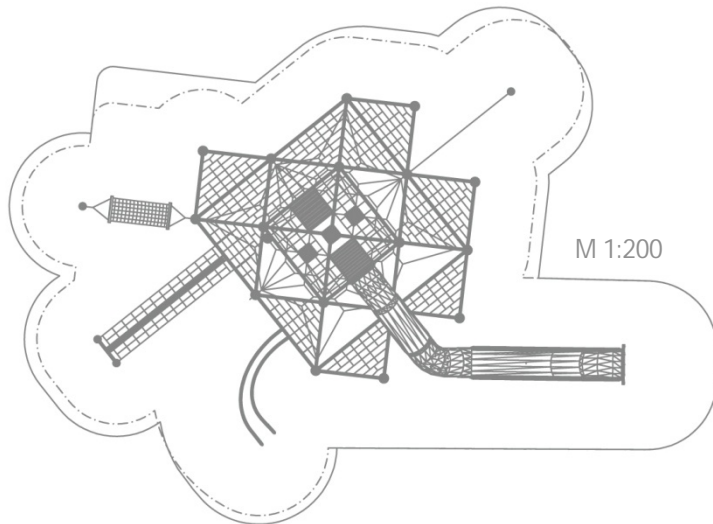
T + 1 864 627 1092
 F + 1 864 627 1178

www.berliner-playequipment.com
info@berliner-seilfabrik.com

Revision: March 2016

Page 1

Neptun.19 – Product Specification



Technical Data.

The following text can also be used for tenders.

- Neptun
- Jungle bridge
- Hammock
- Hand-over-hand rope loops
- Curved Slide
- Banister
- Access net

Members:

Framework-steel pipes, \varnothing 60.3 mm (2 3/8"); anticorrosion treatment and color finish: sandblasting and zinc-/ epoxy-/ polyester-process.

Nodes:

Framework-aluminum ball connectors, \varnothing 250mm (9-13/16"); anticorrosion treatment and color finish: sandblasting and zinc-/ epoxy-/ polyester-process; incorporating an ASTEM TT net tensioning system, securely closed with durable ebonite caps.

Ropes:

U-Rope-round strand ropes with steel cores, \varnothing 16mm (5/8") with galvanized wires, external strands are covered with non-abrasive UV-resistant Polyester-yarn. Maximum breaking stress 115kN.

HDPE plates:

HDPE plates as wall and roof panels made of abrasion-proofed plastic (t=19mm; t=3/4").

Spatial netting:

Rope crossing points are localized with durable, forged aluminum-alloy cloverleaf rings and forged aluminum-alloy ballknots (no plastic connections); in situ-replaceable rope strands (no special tools required).

Access net:

Access net, width 1500mm (59-1/16"), mesh width 250 x 250mm, connected to horizontal member of module with cast aluminum rope clamps. Fixed to the ground with two foundation brackets attached to a horizontal pipe.

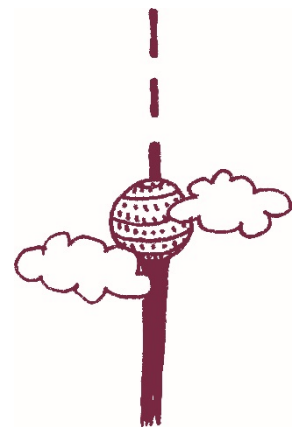

Berliner
Berliner Seilfabrik
Play Equipment Corporation
96 Brookfield Oaks Drive, Suite 140
Greenville, SC 29607

T + 1 864 627 1092
F + 1 864 627 1178

www.berliner-playequipment.com
info@berliner-seilfabrik.com

Revision: March 2016

Page 2



Neptun.19 – Product Specification



Technical Data.

Jungle bridge:

Bridge with thick walk rope comprised of PP-cordage, \varnothing 150 mm (5 7/8"); with steelcore \varnothing 12mm (1/2"), external PP-winding durable stabilized with shrink-rubber sleeves at regular intervals; supporting points at railing net for walk rope protected with shrink rubber sleeves; ends are fixed with 600kg-shackles.

Slide:

Plastic slide made of abrasion-proofed plastic.

Banister:

Curved stainless steel pipes, \varnothing 60.3 mm (2 3/8"); material AISI304 (DIN 1.4301), connected to the main structure with Frameworx-aluminum ball connectors, \varnothing 200mm (7-9/10").

Hammock:

Hammock net with mesh width 100 x 130mm (3-15/16" x 5 1/8"), with two in situ-replaceable square rungs; rungs comprised of stainless steel profile AISI304 (DIN 1.4301) with aluminum end caps; The short sides are suspended from cables and hinged between the node of the net structure and a steel support. The swivel joints are attached to the suspension cables at two flexible points, thus preventing the netting from rolling over.

Hand-over-hand loop rope:

All ropes \varnothing 13/16" (20 mm); length per loop approx. 4 5/16 (110 mm) clear diameter; loops durable fixed to a horizontal rope with aluminum ferrules



Berliner Seilfabrik
Play Equipment Corporation
96 Brookfield Oaks Drive, Suite 140
Greenville, SC 29607

T + 1 864 627 1092
F + 1 864 627 1178

www.berliner-playequipment.com
info@berliner-seilfabrik.com